

### Used With:

#### Flush Only (Split)

Type S only available in ESC & GLF.

#### Non Fibrous (Unsplit)

Not available in Type S.

#### Non Fibrous (Unsplit)

Available in Type I only.

#### Fibrous (Unsplit)

Not available in Type B or Type S.

### Version

**F**

**N**

**C**

**D**

Units of measurement:   Inch  Metric

Shaft size: \_\_\_\_\_  
(Rotating Element - Sleeve, Impeller hub, Seal OD. etc)

Bore size: \_\_\_\_\_

First obstruction: \_\_\_\_\_

Distance from throat to back of the seal if less than 1.850" / 47.00mm: \_\_\_\_\_

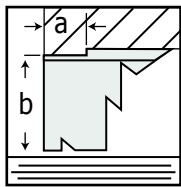
### Shaft rotation as viewed from the motor end: <sup>NOTE 1</sup>



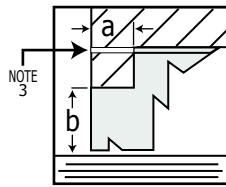
Material:  316SS  416SS  Titanium  GLF <sup>NOTE 2</sup>  ESC  Other: \_\_\_\_\_

### Installation Type: <sup>NOTE 5</sup>

#### Type A



Option 1 (Integral Air Vent)



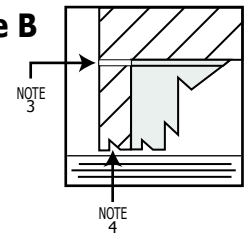
Option 2

Note: If bore minus throat diameter is less than or equal to 0.080" or 2mm use option 1.

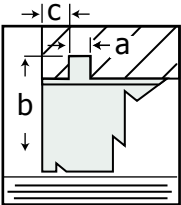
a. Throat width: \_\_\_\_\_

b. Throat diameter: \_\_\_\_\_

#### Type B



#### Type E

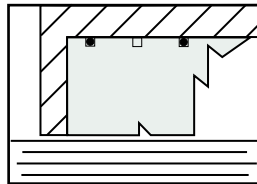


a. Key width:  \_\_\_\_\_

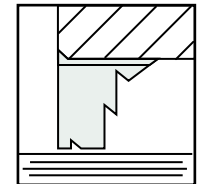
b. Key diameter: \_\_\_\_\_

c. Key position: \_\_\_\_\_

#### Type S



#### Type I



#### Notes:

1  Double ended pumps require L and R devices.

2  GLF material available for Version "F" Type "S" only.

3  Recommended: Drill 0.156" (3.96mm) vent hole to release air when flooding.

4  Recommended: Extend exit groove.

5  SpiralTracs used in Vertical Applications do not incorporate an air vent. Please contact EnviroSeal for air removal options.

### Equipment Information:

Flush:  No  Yes Rate: \_\_\_\_\_

Make:  \_\_\_\_\_

Model: \_\_\_\_\_

Size: \_\_\_\_\_

Product: \_\_\_\_\_

%Solids: \_\_\_\_\_

Temperature: \_\_\_\_\_

### Distributor Information:

Company: \_\_\_\_\_

Specialist: \_\_\_\_\_

P.O.#  \_\_\_\_\_ Qty: \_\_\_\_\_

### Customer Information:

Company: \_\_\_\_\_

Customer Name: \_\_\_\_\_

Signature: \_\_\_\_\_

### EnviroSeal Use Only:

Part no: \_\_\_\_\_

List Price: \_\_\_\_\_

Total Price: \_\_\_\_\_

Ship Date: \_\_\_\_\_

W.O.#: \_\_\_\_\_

US Patents #5,553,868 #5,167,418  
Euro. Pat. App. 0 912 848